

CONTINENTAL D-SERIES

DRYING TUMBLERS —

BRINGING QUICK-DRYING

CONVENIENCE, DURABILITY,

AND PERFORMANCE

TO SELF-SERVICE

LAUNDRIES.

COIN-OPERATED D-SERIES DRYING TUMBLERS

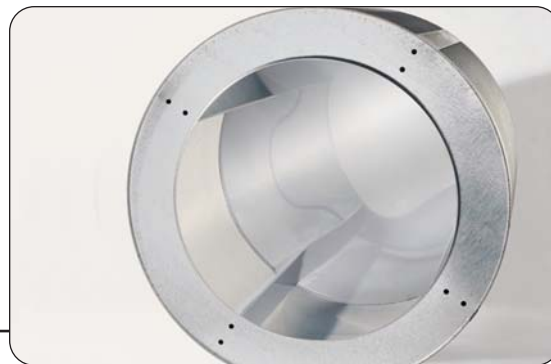
D-SERIES

Continental D-Series Drying Tumblers bring the ultimate in durability and performance to coin laundries. Available in single-pocket 30-, 55- and 80-pound capacities, and in a 30-pound capacity stack, D-Series Tumblers are designed to maximize a coin laundry's bottom line with features offering flexibility, programmability, performance and energy efficiency. Standard with a digital-coin drop or available debit-card ready, D-Series Drying Tumblers feature white, almond or stainless fronts to meet the décor requirements of any self-serve laundry!



POWERFUL

Powerful burners enable D-Series Dryers to reach temperatures up to 190-degrees.



DURABLE

A stainless steel backplate enhances machine durability and appearance for years to come.



EASY-TO-USE

The programmable control with digital simplifies the process of doing laundry.

Radial Airflow & Quick-Drying Convenience

Coin laundry customers demand hot, fast dryers. Continental delivers with the D-Series Drying Tumbler. Designed for quick, even drying, D-Series dryers utilize radial airflow—a system that captures heated intake air and distributes it evenly throughout the entire drying cylinder. As heated air is released from the top of the basket, linens, which are rotated from bottom to top, fall and separate throughout the entire cylinder. Simultaneously, heated air is pushed through and around the load—eliminating hot spots and expediting the drying process.

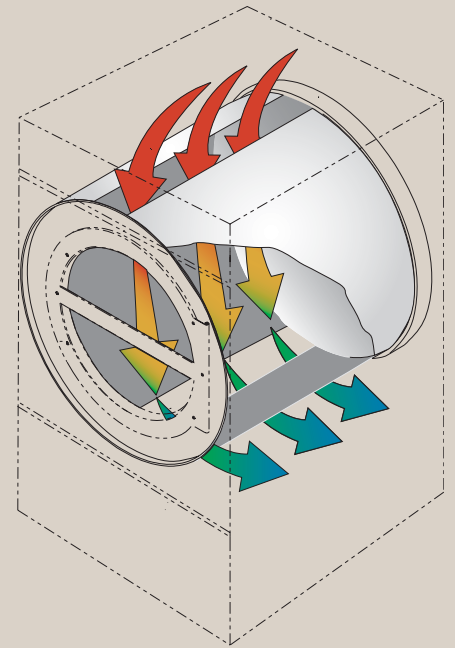
Efficient drying is achieved through the proper balance of heat, airflow, and tumbling action. D-Series dryers maximize these variables using fully perforated drums for increased airflow and programmable temperatures up to 190 degrees—nearly 40 degrees higher than some dryers! Superior tumbling action comes as a result of large diameter cylinders and

Right: Unlike other dryer designs which release air from the back of the cylinder—pushing laundry forward—D-Series dryers use efficient radial airflow which circulates heated air from the top of the cylinder down through linen as it rotates. This ensures maximum load separation, elimination of laundry hot spots and utilization of the tumbler's total capacity.

efficient radial airflow. The result is fast and efficient drying—just what your customers want!

Exclusive Stainless Backplate

D-Series dryers are built industrial strength, yet work to reduce wear and tear on your customers' laundry. Each drying tumbler cylinder features an exclusive annealed stainless steel backplate that works to reduce friction between the tumbler and laundry. The patented backplate is not only gentler on fabric, it brings a bright, modern, and clean look to coin laundries and enhances machine durability.



Serviceability

D-Series tumblers are designed to eliminate the headaches associated with routine maintenance and servicing. That's why all major components—including belts, motors, drive systems, utility connections and fans—are accessible from the rear of



readout
ndry.



30-pound stack



30-pound single pocket

INVESTMENT BUILT TO LAST

the machine. Unlike some competitor stack models, the D-Series Stack Dryer features a single gas and electrical connection, rather than two—making replacement and new installations quicker and less expensive. A self-cleaning lint screen on all single-pocket units and a full-length lint screen located on the front of all stack units makes lint removal a snap!

Microprocessor Control Brings Programmability & Flexibility

The D-Series Microprocessor Control brings added convenience to customers and flexibility and control to storeowners. Continental's D-Series control simplifies the process of doing laundry thanks to its easy-to-understand, step-by-step instructions. With D-Series, customers are updated on dryer and load status via a digital-vend display. The display automatically adds time as quarters are inserted and illuminates the time remaining until drying is complete. Customers want to

know what's going on with their laundry. With D-Series Drying Tumblers, they do!

The microprocessor control puts storeowners in the driver's seat. The drying tumbler's control gives owners the ability to program variables that impact a store's bottom line. By programming temperature, vend price, and heat and cool down time, self-service laundries can capitalize on peak laundry hours, increase energy savings and bolster profits.

Energy-Efficient Features

Features designed to improve energy efficiency are standard and an important part of the D-Series line. The microprocessor control allows self-service laundries to control temperature and cycle time—variables that also affect energy consumption. An instant ignition and a unique heat reclaimer system also work to curb energy usage. The heat reclaimer system captures pre-heated exhaust air and recirculates it through the tumbler.



55-pound single pocket

80-pound single pocket



Tough Construction; Quiet Operation

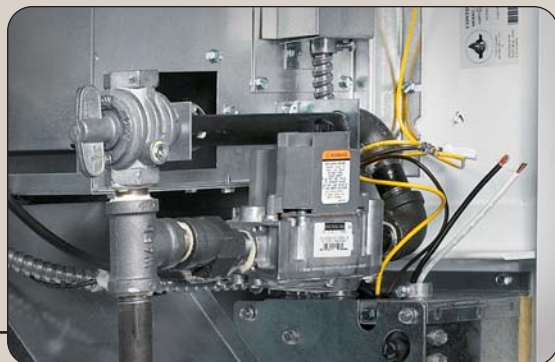
D-Series Drying Tumblers are built to withstand the toughest laundry conditions, with heavy-gauge steel door frames, bars and hinges. A cast iron bearing housing and oversized, durable bearings help to further ensure years of trouble-free operation. The machines are protected from rust and corrosion thanks to an electrostatically applied, polyester powder coat finish, and every dryer features an extra large loading door with full-view glass and an easy-grip handle.

The dryers are built for longevity, yet offer surprisingly quiet operation. A tough dual-belt drive system reduces noise, offering smooth performance and maximum energy savings. The entire D-Series line is backed by Continental's 3-year limited warranty—among the best in the industry!

Our Mission: Your Success

At Continental, we believe that the success of our customers determines the continued growth and success of our company. That's why

we're committed to providing our customers with a full line of quality-built Continental commercial/industrial laundry equipment, as well as a multitude of marketing and service support programs. Continental, along with its professional distributor network, offers a complete laundry operations package designed to assist customers in building strong foundations for their businesses. From a dedicated service team and large parts and equipment inventories to financing and comprehensive planning services, "Our Mission is Your Success".



FLEXIBLE

A single gas and electrical connection on stack units makes installation easy and affordable.



CONTINENTAL QUALITY

Backed by Continental Girbau, Inc., a strong and innovative company headquartered in Oshkosh, WI.

CONTINENTAL COIN-OPERATED, D-SERIES DRYING TUMBLER SPECIFICATIONS*

	30-Pound Stack	30-Pound	55-Pound	80-Pound
Basket Capacity lbs (kg)	up to 30 (13.5) per basket	up to 30 (13.5)	up to 55 (24.8)	up to 80 (36.3)
Basket Dimensions:				
Diameter inch (mm)	30 (762)	30 (762)	32.5 (826)	36.5 (927)
Depth inch (mm)	27.5 (699)	29.5 (749)	38 (965)	38 (965)
Volume cu.ft (dm ³)	11.25 (319)	12.1 (342)	18.2 (517)	23 (651)
Door Opening inch (mm)	22.69 (576)	22.69 (576)	22.69 (576)	22.69 (576)
Crated Weight lbs (kg)	737 (334)	491 (223)	634 (288)	693 (312)
Net Weight: lbs (kg)	685 (311)	452 (205)	581 (264)	613 (278)
Height (with legs):				
Maximum inch (mm)	77.63 (1972)	73.63 (1870)	73.25 (1861)	76.5 (1943)
Minimum inch (mm)	76.63 (1947)	72.63 (1845)	72.25 (1835)	75.5 (1918)
Depth inch (mm)	47.31 (1202)	43.38 (1102)	51.13 (1299)	51.13 (1299)
Width inch (mm)	31.5 (800)	31.5 (800)	34.44 (875)	38.44 (975)
Minimum Clearances:				
Rear inch (mm)	18 (457)	18 (457)	18 (457)	18 (457)
Top inch (mm)	10 (254)	10 (254)	10 (254)	10 (254)
Front inch (mm)	48 (1219)	48 (1219)	48 (1219)	48 (1219)
Exhaust Diameter inch (mm)	8 (203)*	8 (203)	8 (203)	8 (203)
Exhaust Air Flow cfm (m ³ /min)	500 (14.2) per basket	830 (23.5)	910 (25.77)	1200 (33.98)
Basket Motor Power Hp (kw)	1/2 (0.37) per basket	1/2 (0.37)	3/4 (0.56)	1 (0.75)
Gas Heating** BTU/h (Kcal/h)	80,000 (20160) per basket	90,000 (22680)	160,000 (40320)	215,000 (54180)
Gas Inlet Diameter inch	1/2 N.P.T.	1/2 N.P.T.	1/2 N.P.T.	1/2 N.P.T.



- * Two 6-inch diameter exhaust connections are available.
- ** LP kits are available. Contact Continental for details.
- *** Product design and specifications are subject to change without notice. For the most current and complete technical specifications and architectural line drawings, please visit our web site at www.continentalgirbau.com.

DISTRIBUTED BY:



www.continentalgirbau.com • 800-256-1073
 2500 State Road 44 • Oshkosh, WI 54904 • 920-231-8222 • FAX 920-231-4666